

## INFLUENCE OF ELECTRON BEAM ION SOURCE PARAMETERS ON DEUTERATED PROPANE (C<sub>3</sub>D<sub>8</sub>) FRAGMENTATION PROCESS

Karol Szary<sup>1)</sup>, Dariusz Banaś<sup>1)</sup>, Iłona Stabrawa<sup>1)</sup>, Regina Stachura<sup>1,2)</sup>, Aldona Kubala-Kukuś<sup>1)</sup>, Jacek Semaniak<sup>1,2)</sup>, Paweł Jagodziński<sup>1,2)</sup>, Daniel Sobota<sup>1)</sup>, Marek Pajek<sup>1)</sup>, Bartosz Majewski<sup>3)</sup>, Marta Łabuda<sup>3,4)</sup>

1) Jan Kochanowski University, Institute of Physics, Uniwersytecka 7, 25-406 Kielce, Poland (✉ [ilona.stabrawa@ujk.edu.pl](mailto:ilona.stabrawa@ujk.edu.pl))

2) Central Office of Measures, Elektoralna 2, 00-139 Warsaw, Poland.

3) Gdańsk University of Technology, Institute of Physics and Computer Science, Gabriela Narutowicza 11/12, 80-233 Gdańsk, Poland

4) Gdańsk University of Technology, BioTechMed Center, Gabriela Narutowicza 11/12, 80-233 Gdańsk, Poland

### Abstract

In this work the electron beam ion source (EBIS) was used to study the molecular fragmentation of the deuterated propane C<sub>3</sub>D<sub>8</sub> molecules. The experiments were performed in the Kielce EBIS facility at the Jan Kochanowski University (Kielce, Poland). During the measurements the EBIS was operating in so-called leaky mode, which guaranteed a wide spectrum of fragmented ions with a constant value of the beam current. The molecular fragments produced in the source were charge separated using a dipole magnet and detected with Faraday cup connected to a high-sensitive electrometer. The measured mass spectrum exhibited a variety of possible molecular fragments, including CD<sub>x</sub> (x = 0-3), C<sub>2</sub>D<sub>x</sub> (x = 0-5), and C<sub>3</sub>D<sub>x</sub> (x = 0-8). Systematic tests were performed to illustrate the influence of working gas pressure and current of the electron beam on the intensity of individual fragmentary ions.

Keywords: electron beam ion source, deuterated propane, electronic ionization, mass spectrometry, molecular fragmentation.

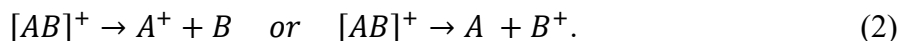
### 1. Introduction

The *electron beam ion source* (EBIS) is a universal device for producing, trapping and extracting ions in high charge states. The EBIS can also be used for production of low charged molecular ions by fragmentation of complex molecules in high-energy dense electron beam [1-4]. Study of fragmentation processes at high electron energies is an interesting field of research in the context of the description of the fragmentation phenomena as well as interactions of the fragmentation products with surfaces [5, 6]. Molecular fragmentation is defined as the dissociation of energetically unstable molecular ions formed from molecules in the ionization chamber [5-9] to various fragmentary ions. These ions, detected using mass spectrometry, form a pattern called mass spectrum, which can be used to determine structure of the produced fragments, study the fragmentation processes and efficiency of a gas production [10-12]. The ionization process can occur through collisions with: electrons (*electronic ionization* EI), reactive gas ions (*chemical ionization* CI), fast atoms (*fast atom bombardment* FAB) or fast ions (*secondary ion mass spectrometry* SIMS) as well as in *field desorption processes* (FD) and *field ionization* (FI).

In electron ionization (EI) of a molecular gas, the [AB] molecule is excited (gains internal energy) in collisions with the electron beam e<sup>-</sup>, which can lead to the ejection of one of its electrons and conversion of the molecule into a [AB]<sup>+</sup> positive molecular ion:



Smaller or greater excess of energy in the molecular ion, can cause its dissociation into fragments *i.e.* fragmentary ions and molecule, atom or radical:



An example of the fragmentation process is illustrated in Fig. 1, which shows the process of electron ionization of a deuterated propane molecule  $C_3D_8$  in an electron beam ion source. Fragmentation in this type of source is a result of the process of consecutive EI. At the top of the scheme, the dissociation of deuterated propane  $C_3D_8$  molecule into charged and neutral molecule fragments is depicted. At the bottom, the diagram shows only ionized deuterated propane  $C_3D_8$  molecule (that has not dissociated) [8].

In this paper, we present the results of the first test experiment carried out using the Kielce EBIS facility, located at the Institute of Physics of the Jan Kochanowski University in Kielce. In the experiment we studied the process of fragmentation of deuterated propane molecule  $C_3D_8$ . The aim of the experiments was to determine the influence of the parameters of the ion source (Dresden EBIS-A) of the facility, such as the pressure of the working gas and current of the electron beam, on the intensity of the  $C_3D_8$  molecule fragmentation products.

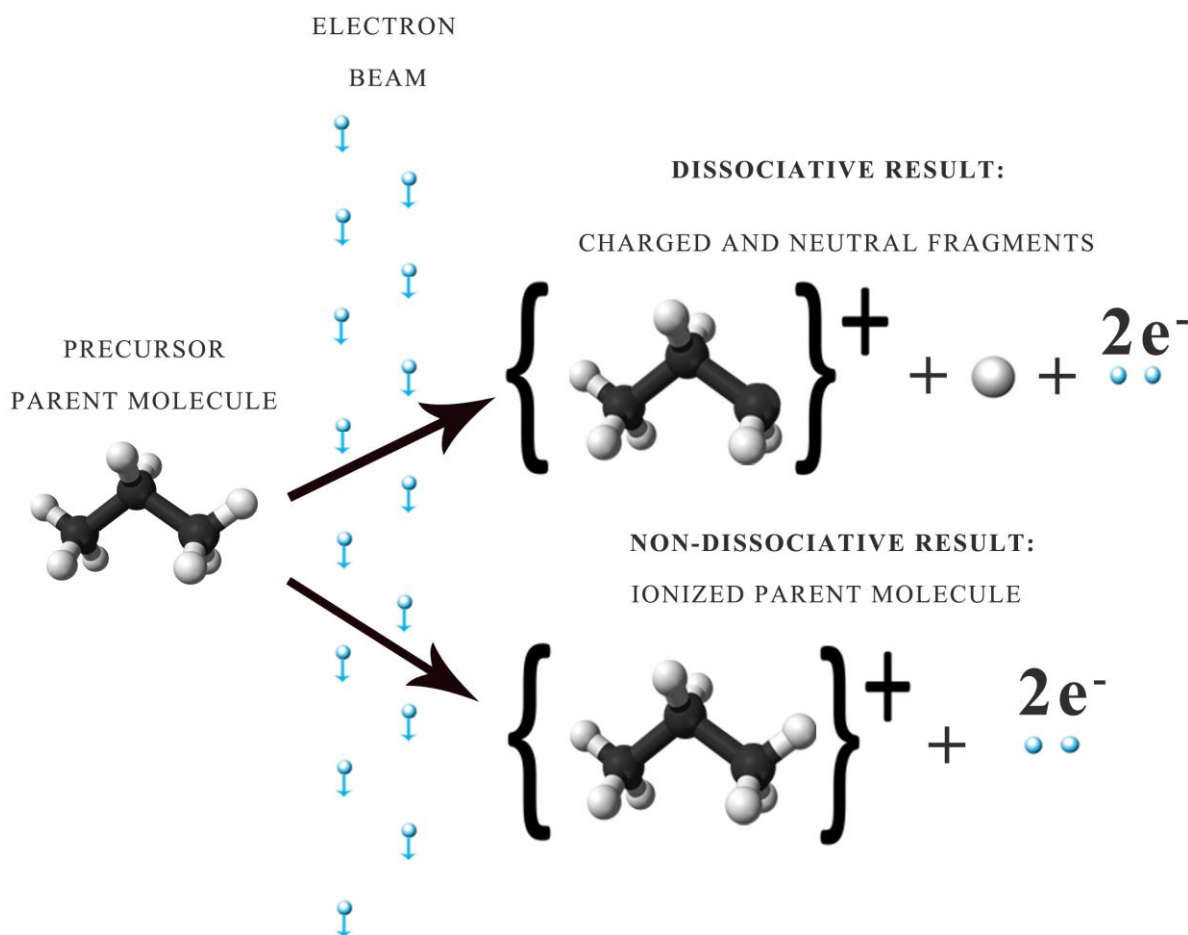


Fig. 1. Electron ionization (EI) of a deuterated propane  $C_3D_8$  molecule. Firstly molecular ion  $[C_3D_8]^+$  is produced which then dissociates in various ways to form more fragmentary ions such as  $[C_yD_x]^+$ ,  $C^+$ ,  $D^+$  and other, including those with higher charge state ( $x, y$  are the number of individual atoms in the molecule).

## 2. Experimental setup

The Kielce EBIS facility comprises several key components (see Fig. 2), including the EBIS-A ion source equipped with an integrated Electron Gun (EG), a dipole magnet for separating ion beams based on charge to mass ratio, and the target chamber. Beam geometry adjustment is achieved through the use of Einzel Lenses (EL A&B), 2-axis deflectors (DF A&B), and a 4-jaw Slit System (SS). The ion beam current is measured using Faraday Cups (FC A&B) that are connected to a highly sensitive Keithley electrometer.

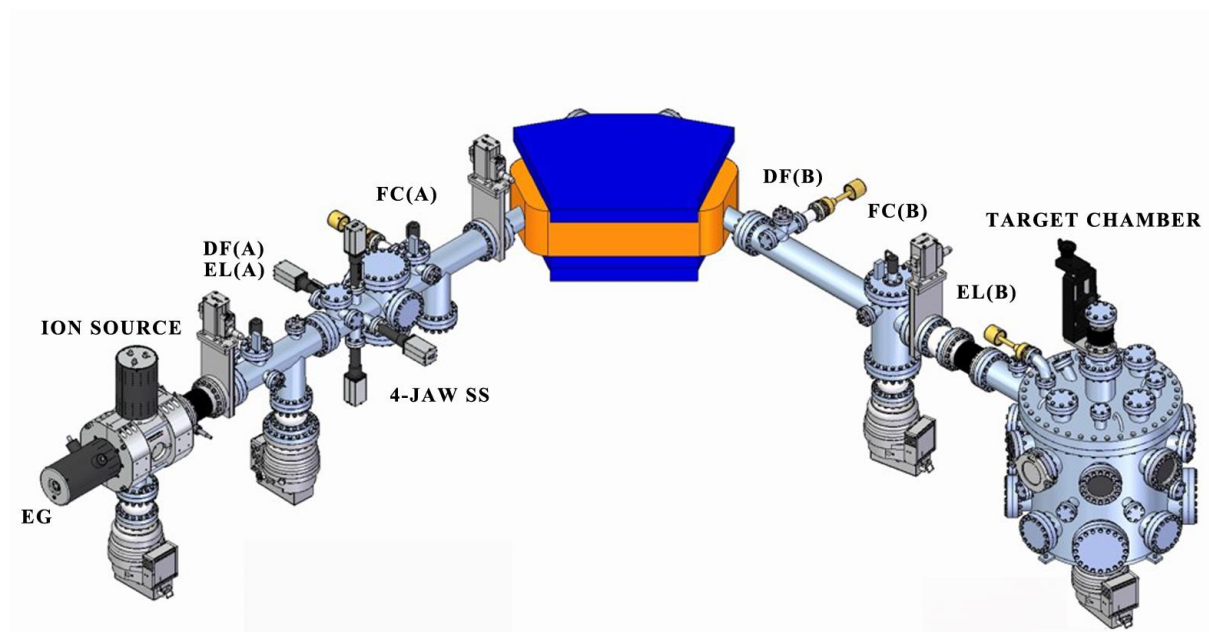


Fig. 2. Scheme of the EBIS facility. EG - electron gun, DF - deflectors, EL - einzel lenses, FC - Faraday cups, 4-JAW SS - four-jaw slit system.

The source provides a diverse range of slow, highly charged ions, starting from bare ions of light elements to Ne-like and Ar-like ions of high-Z elements. The maximum electron energy and current available for ionizing the trapped ions are 25 keV and 200 mA, respectively. The produced ions can be extracted either in a pulsed mode, with pulse widths ranging from 2 s to 40 s, or in a continuous "leaky" (DC) mode [13-15].

For the purpose of the experiment, Propane (D8, 98%) from Cambridge Isotope Laboratories Inc. was used as the working gas. The gas was injected into EBIS-A source through a precision thermally controlled UDV 046 valve. The initial pressure, measured before dosing the working gas, was  $p = 4 \times 10^{-10}$  mbar, while the injection pressure ranged from  $p = 3 \times 10^{-9}$  mbar to  $1.5 \times 10^{-8}$  mbar. Within the source, the molecules of gas are radially confined by the combined effects of the space charge of the electron beam and the magnetic field generated by permanent magnets, while axially trapped by electrostatic barriers (trap) defined by three drift tubes of the source.

During presented measurements, the EBIS was operated in a "leaky mode", which ensured a wide spectrum of fragmentation ions with a constant value of the beam current. In this configuration the trap potential in direction to the extraction is lower than on the other side. The molecules stay in the trap for a short time which prevents their excessive fragmentation (observed also in [1]). The electric potentials in the EBIS ion trap are shown in Fig. 3, and parameters of the ion source used in the experiments are summarized in Table 1.

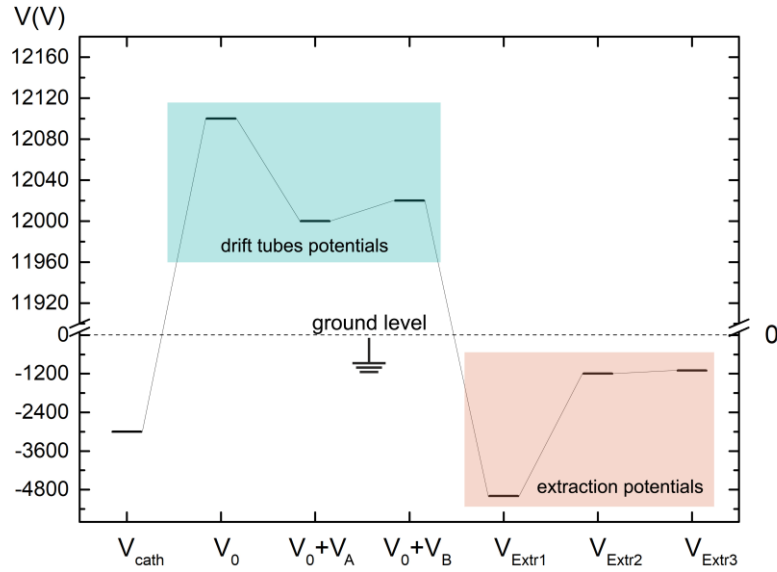


Fig. 3. Diagram of electric potentials in the EBIS ion trap, including the main adjustable electrical parameters. The selection of individual potential values affects among others the electron energy value and the operating mode of the trap (leaky or pulsed).

Table 1. EBIS-A parameters during measurements.

Parameter	Value
Cathode potential $V_{cath}$	-3 kV
Drift tube potential $V_0$	12.1 kV
Trap potential $V_A$	-100 V
Trap potential $V_B$ (trap open)	-80 V
Extraction potentials	$V_{Ext1}=-5$ kV, $V_{Ext2}=-1.2$ kV, $V_{Ext3}=-1.1$ kV
Current of the electron beam $I_e$	30 mA, 50 mA, 70 mA, 90 mA
Working gas pressure $p$	$1.5 \times 10^{-8}$ mbar - $3 \times 10^{-9}$ mbar (five values)

Then, the ion beam is extracted from the trap using three extraction potentials ( $V_{Ext1,2,3}$ ). In the region between the trap and the mass-to-charge separator, preliminary diagnostics and beam focusing are performed. The selection of main trapping parameters ( $V_0$ ,  $V_A$ ,  $V_B$ ,  $V_{Ext1,2,3}$ ) is verified based on the signal intensity observed in FC(A). At this stage, it is also possible to focus the beam using a three-segment einzel lens, which generates an electric field capable of compressing or expanding the passing ion beam depending on the applied polarization. The X-Y beam positioning is controlled via integrated deflector, featuring a 30 mm aperture. The operating deflection voltages in both directions range from  $-1250$  V. The fragmentary ions produced and extracted from the source were then directed to the mass-to-charge separation section.

The Danfysik dipole magnet with a 50 mm pole gap was powered by a high-stability (10 ppm) power supply. The bending angle and bending radius of the magnet are 90 degrees and 461 mm, respectively.

After passing through a magnetic field of the dipole magnet, the ion beam undergoes bending and separation in dependence of the mass and charge of its components. Next, the separated ions enter the FC(B), where their total charge is measured using Keithley 6517B electrometer working in range of 200 pA and 2 nA, with resolution of 0.001 pA and 0.01 pA, respectively.

The precise scan of magnetic field in the range of 20.5 - 256.4 mT, with a step size of 0.028 mT, allowed for the registration of the fragmentary ions generated during the fragmentation process and the quantitative determination of the contribution of individual components. In order to investigate the influence of the parameters of the EBIS-A ion source on the products of the fragmentation process, we conducted systematic tests for different measurement configurations: working gas pressure and current of the electron beam. For all these configurations, the intensity of individual fragments was recorded and the stoichiometric ratios were calculated.

### 3. Experimental results

#### 3.1. Ion mass spectrum calibration

By conducting a precise scan across a broad magnetic field range, we successfully obtained a mass spectra of deuterated propane  $C_3D_8$ . An example of such spectrum is presented in the Fig. 4.

The spectrum was measured for an electron beam energy 15 keV and the electron beam current of  $I_e = 30$  mA. The operating gas pressure was maintained at  $p = 6 \times 10^{-9}$  mbar. This general spectrum encompasses a wide range of fragmentary ions, beginning with: the deuterium  $D^+$ ,  $D_2^+$ , carbon in different charge states, going through groups of  $CD_x^+$  ( $x = 0-3$ ),  $C_2D_x^+$  ( $x = 0-5$ ), and  $C_3D_x^+$  ( $x = 0-8$ ) (where  $x$  is number of deuterium atoms). In addition, some molecular ions of hydrocarbons -  $C_nH_m^+$  ( $n = 1-3$ ,  $m = 1-5$ ) were also identified in the spectra, along with ionized rest gas atoms and highly charged xenon remnants (from previous experiments).

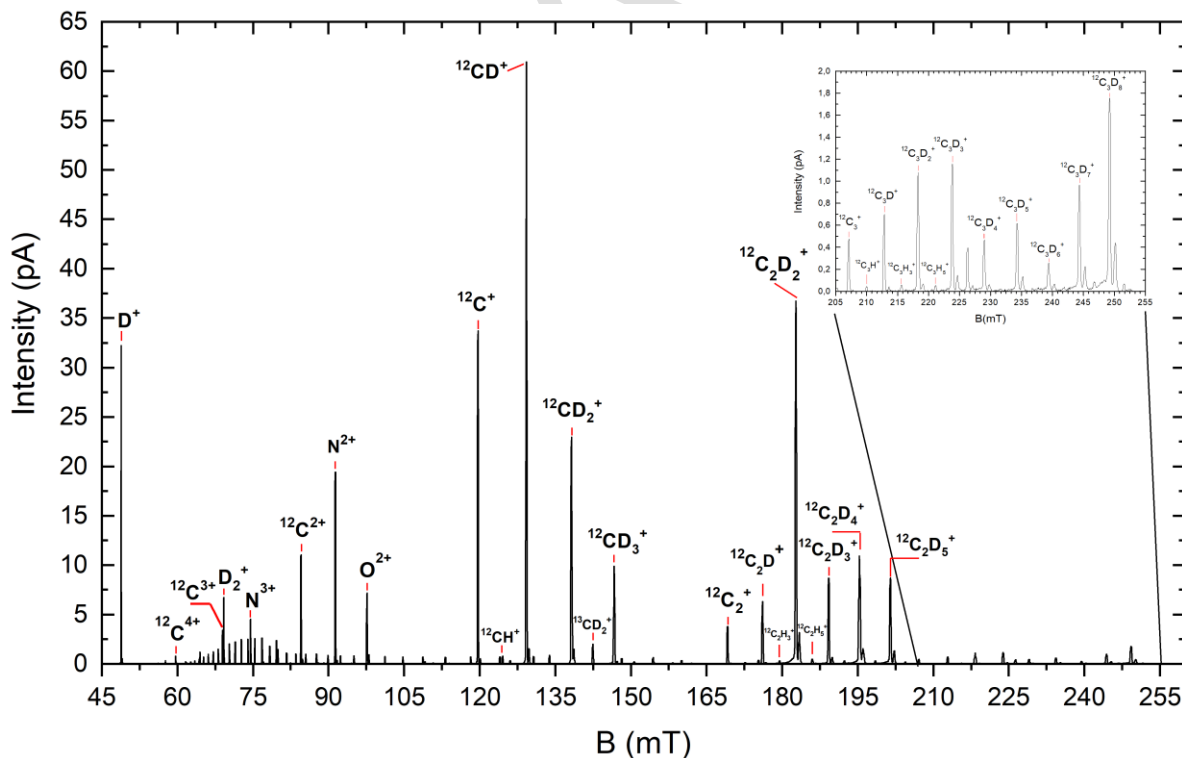


Fig. 4. Mass spectrum of deuterated propane  $C_3D_8$  measured in leaky mode. Electron beam energy was set to 15 keV, electron current  $I_e = 30$  mA, and working gas pressure  $p = 6 \times 10^{-9}$  mbar. For better visualization of  $C_3D_x^+$  low intensity lines the inset graph is added.

The theoretical values of magnetic induction corresponding to individual fragments of the molecule present in the mass spectrum were calculated using the basic equation of the mass spectrometry:

$$\frac{m}{q} = \frac{B^2 r^2 e}{2U}, \quad (3)$$

where:  $m$  - ion mass,  $q$  - ion charge,  $e$  - elementary charge,  $r$  - bending radius of magnet ( $r = 0.4575$  m),  $U$  - accelerating voltage.

The raw experimental spectra were corrected using eight calibration peaks covering the entire area of the recorded spectrum. An example spectrum is shown in Fig. 5.

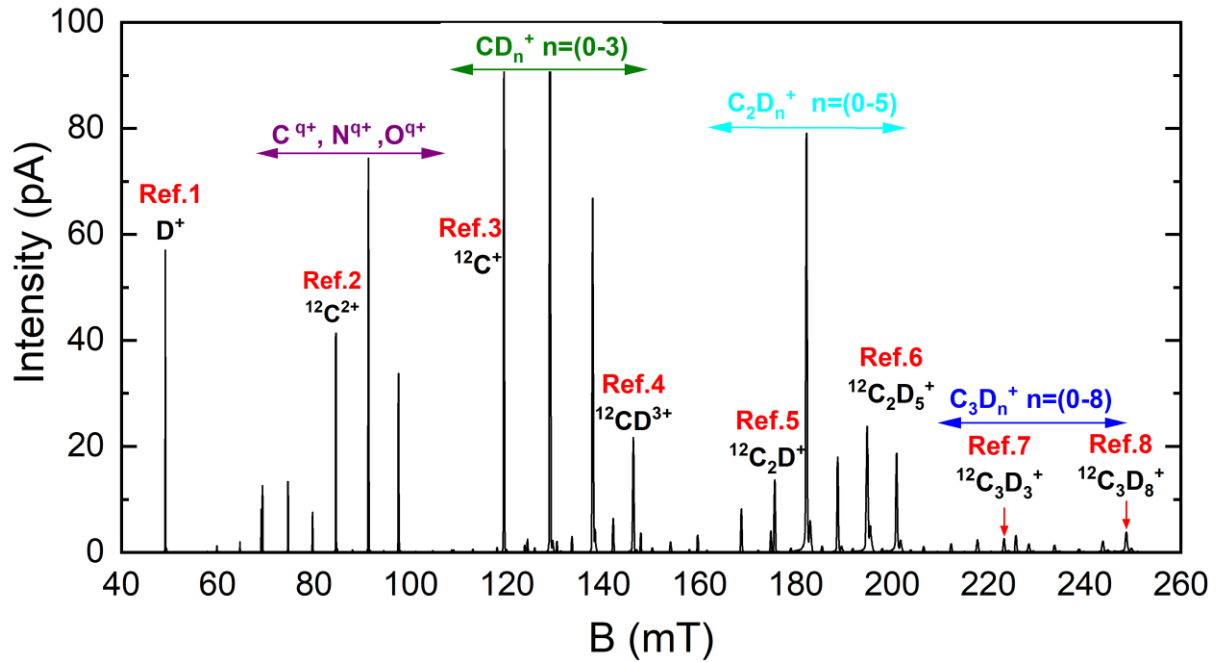


Fig. 5. Mass spectrum of deuterated propane  $C_3D_8$  measured in leaky mode with eight calibration peaks covering the entire area of the recorded spectrum. Electron beam energy was set to 15 keV, electron current  $I_e = 70$  mA, and working gas pressure  $p = 6 \times 10^{-9}$  mbar.

The list of selected peaks along with the corresponding theoretical, experimental and calibrated magnetic field induction values for these peaks are presented in Table 2 [16]. Calibration carried out in this way allowed for the unambiguous identification of other unknown peaks in the mass spectrum.

Table 2. Reference line of magnetic induction  $B$  values for selected fragmentary ions, for pressure  $p = 6 \times 10^{-9}$  mbar and electron current  $I_e = 70$  mA.

Ref No.	Ion	$B_{\text{theor.}}(\text{mT})$	$B_{\text{exp.}}(\text{mT})$	$B_{\text{calibrated}}(\text{mT})$
1	$D^+$	48.974	49.128	48.975
2	$C^{2+}$	84.528	84.570	84.523
3	$C^+$	119.541	119.452	119.558
4	$CD_3^+$	146.579	146.318	146.548
5	$C_2D^+$	176.008	175.699	176.045
6	$CD_5^+$	201.427	200.978	201.389
7	$C_3D_3^+$	223.754	223.339	223.773
8	$C_3D_8^+$	249.115	248.695	249.112



### 3.2. Dependence of the molecular ions intensity on the gas pressure

A series of measurements was conducted, while maintaining a constant electron energy of 15 keV and an electron beam current  $I_e$  of 30 mA, to study the influence of variation of the working gas pressure on the fragmentation products intensity. The range of these pressure changes from  $1.5 \times 10^{-8}$  mbar to  $3 \times 10^{-9}$  mbar. The mass spectrum acquisitions were performed after stabilizing the pressure value in the source. The results of these measurements, which contained information on the intensities of individual fragmentary ions recorded in the spectrum, were compiled in the form of Figs. 6 and 7. A clear increase in intensity can be observed as a function of the increase in working gas pressure for the individual molecular ions in the groups:  $C_3D_x^+$ ,  $C_2D_x^+$ ,  $CD_x^+$  and also for  $C^{q+}$  ions. Moreover we can see that for such a source configuration, some molecular ions are clearly preferred in the fragmentation process (e.g.  $C_2D_2^+$ ).

The comparison of results obtained from two measurement conducted at two different working gas pressures, namely  $1.5 \times 10^{-8}$  mbar and  $3 \times 10^{-9}$  mbar, and constant electron beam current equal 30 mA, is presented in Fig. 8. The data show a clear increase in the intensity of individual spectrum components with increasing gas pressure. The increase for the  $C_3D_x^+$  group is slightly lower compared to the other two groups, while among components in the ( $C_2D_x^+$ ) group, the  $C_2D_2^+$  fragment stands out, with its intensity increasing by more than 240 times.

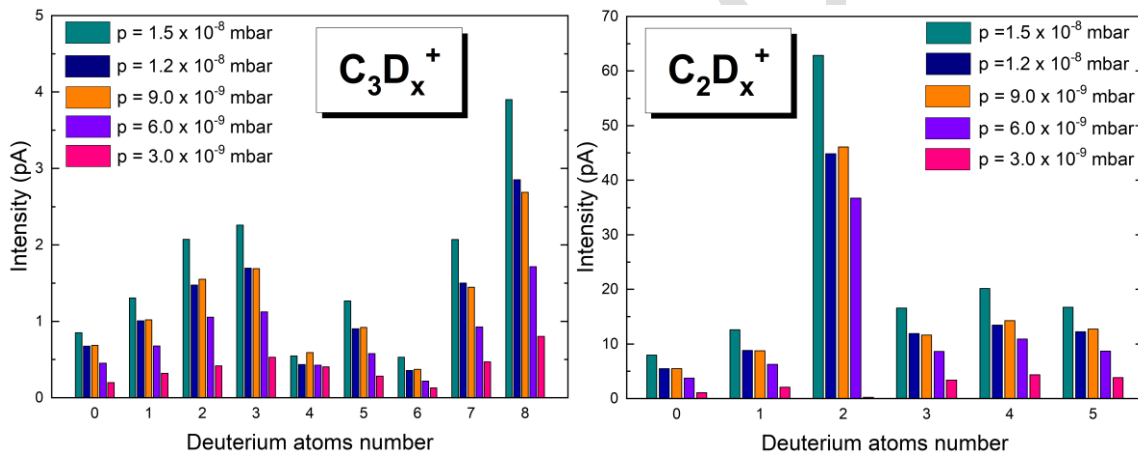


Fig. 6. Influence of working gas pressure on the intensity of individual molecular ions in  $C_3D_x^+$  (left) and  $C_2D_x^+$  (right) groups,  $E_e = 15\text{keV}$  and  $I_e = 30\text{mA}$ .

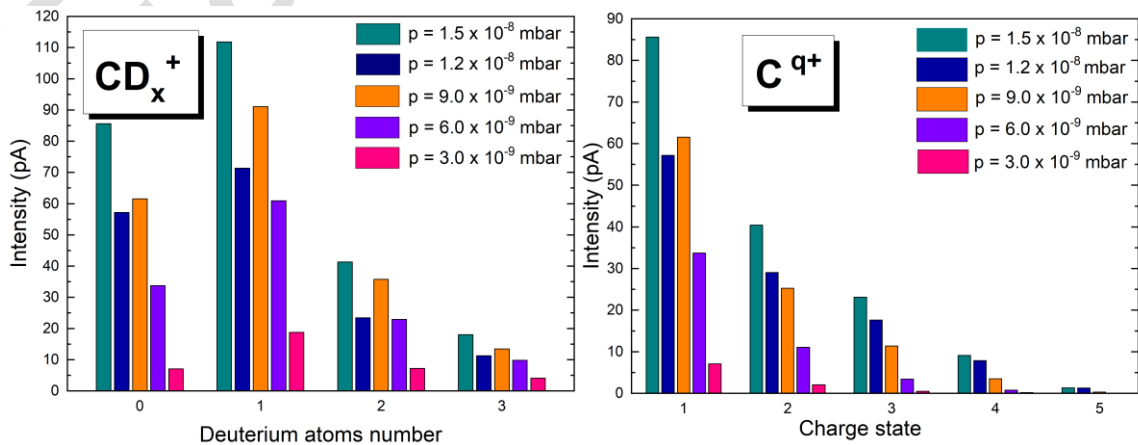


Fig. 7. Influence of working gas pressure on the intensity of individual molecular ions in  $CD_x^+$  group (left) and pressure effects on the observed intensity of various charge state of carbon  $C^{q+}$  (right),  $E_e = 15\text{keV}$  and  $I_e = 30\text{mA}$ .

### 3.3. Dependence of the molecular ions intensity on the electron beam current

The series of results obtained for measurements carried out for various electron current values in the range of 30-90 mA show a number of interesting relationships (Figs. 9 and 10). For the heaviest fragment ions (in the  $C_3D_x^+$  group area), the dominant fragments are  $C_3D_8^+$  and  $C_3D_7^+$ . In their case, the intensity saturation effect is noticeable for a current value of 70 mA. At the value of 90 mA there is a slight decrease in intensity - for these two fragments. A similar saturation effect is observed for the  $C_3D_6^+$  and  $C_3D_5^+$  fragments. For the remaining fragments in this group, the current intensity associated with a given fragment ion increases with the increase in the intensity of the electron beam. Interestingly, for ions in the range:  $C_3D^+$  -  $C_3D_6^+$ , the  $C_3D_3^+$  ion is distinguished in terms of intensity. In the group of molecular ions containing two carbon atoms ( $C_2D_x^+$ ), the increase in the intensity of individual ions is consistent with the increase in the intensity of the electron current. In the case of elements of this group, we observe the molecular fragment  $C_2D_2^+$  distinguished by its intensity.

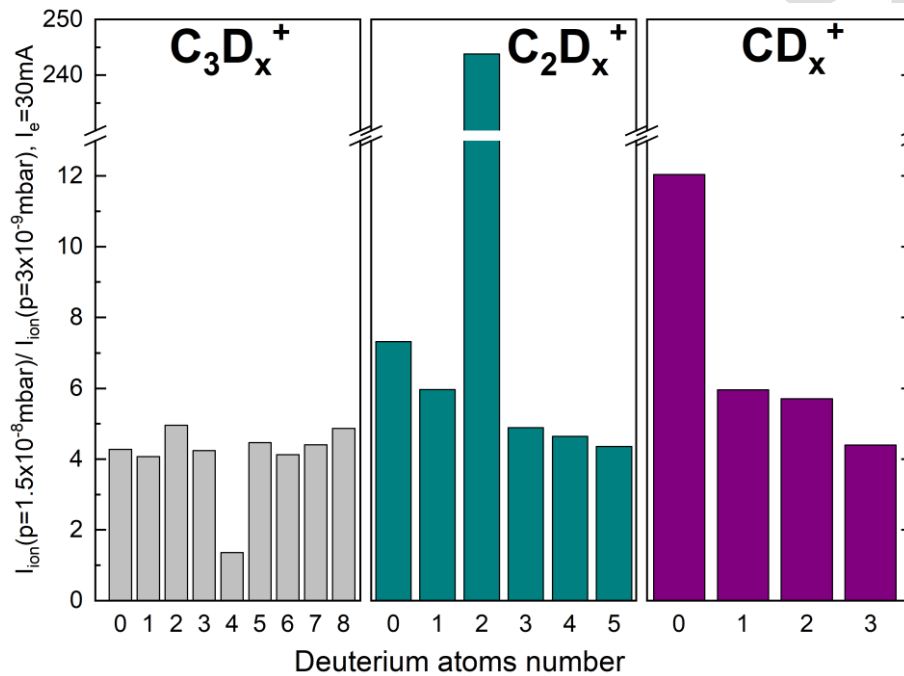


Fig. 8. Effect of the working gas pressure change on the intensity of the peak of a given fragmentation ion in the mass spectrum. The individual bars express the ratio of the intensity of the given peak in relation to the working gas pressure ratio:  $1.5 \times 10^{-8} \text{ mbar} / 3 \times 10^{-9} \text{ mbar}$ . The measurements were done for electron energy of 15 keV and electron current equal 30 mA.

The obtained current intensities associated with the presence of these ions exceed the typical intensities obtained for other fragments in this group by three times. In the  $CD^+$  group, we again observe an increase in the intensity of individual fragment ions as a function of electron current. The intensity of the current associated with fragment ions:  $CD^+$  is distinguished for the remaining elements of this group and is almost twice as high as the intensity obtained for the remaining fragments in this group. The last graph (Fig. 10 on the right) shows the influence of the intensity of the electron beam on the obtained intensities of unbound carbon ions (with different charge states). The intensity of the ion current decreases rapidly as the charge state increases. For charge states  $q = 1$  and  $q = 2$ , we see an increase in the intensity of the ion beam current as the electron current increases. However, this relationship is disturbed for  $C^{3+}$  and  $C^{4+}$  ions.



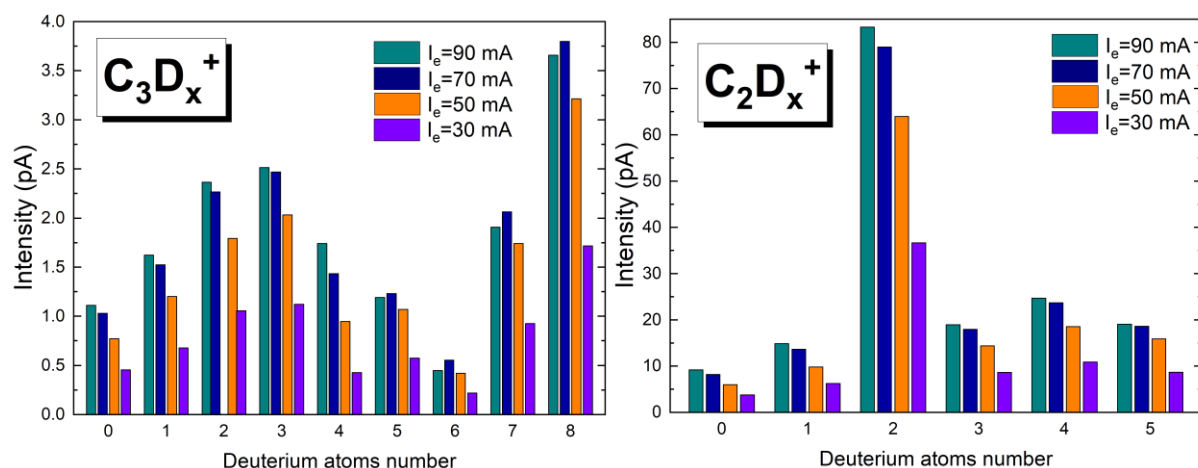


Fig. 9. Influence of electron current on the intensity of individual molecular ions in  $C_3D_x^+$  (left) and  $C_2D_x^+$  (right) groups,  $E_e = 15$  keV and  $p = 6 \times 10^{-9}$  mbar.

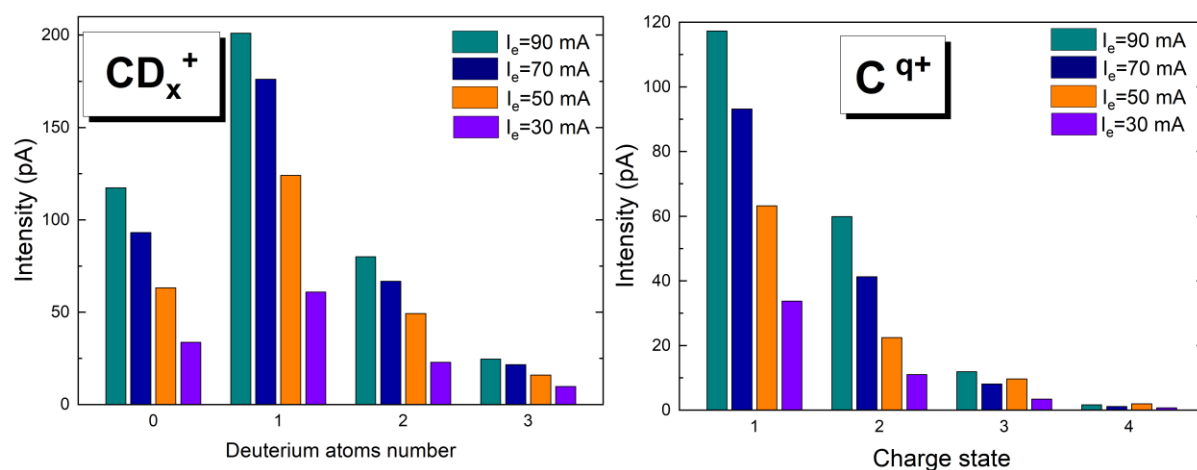


Fig. 10. Influence of electron current on the intensity of individual molecular ions in  $CD_x^+$  group (left) and on the observed intensity of various charge state of carbon  $C^{q+}$  (right),  $E_e = 15$  keV and  $p = 6 \times 10^{-9}$  mbar.

After a detailed analysis of the spectra, the intensity of the lines of the groups:  $C_3D_x^+$ ,  $C_2D_x^+$  and  $CD_x^+$  have been studied for four different electron beam currents  $I_e = 30$  mA, 50 mA, 70 mA and 90 mA and for constant pressure value  $1.2 \times 10^{-8}$  mbar. Exemplary intensity ratios for selected molecular ions measured for beam currents of 90 mA and 30 mA are shown in the Fig. 11. The measurements were done at electron energy of 15 keV.

The intensities of the extracted fragments of the deuterated propane molecule at a gas pressure of  $1.2 \times 10^{-8}$  mbar for 90 mA electron beam intensity are about 3 - 7 times higher than in the case of 30 mA electron beam current. The authors of the study [1], examining such a relationship for propane gas, obtained values from 2.5 - 14 times by conducting the same tests. Interestingly in this case, the component ( $C_3D_x^+$ ) with four deuterium atoms is much more intense than the others in this group (opposite to the previous case).

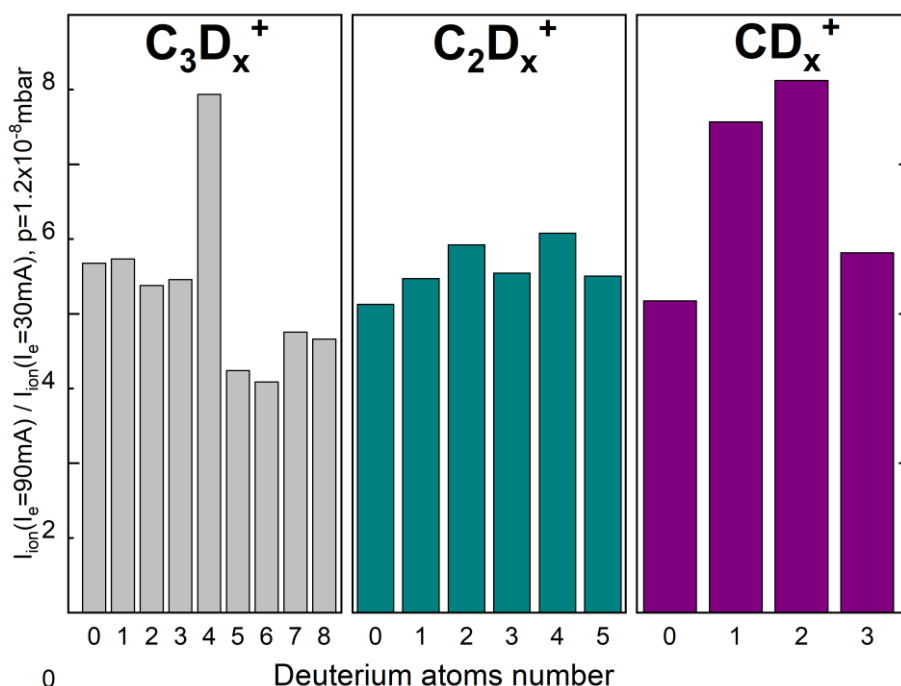


Fig. 11. Effect of electron beam current  $I_e$  change on the intensity of the peak of a given fragmentation ion in the mass spectrum. The individual bars express the ratio of the intensity of the given peak in relation to the electron current ratio: 90 mA/30 mA at a given pressure equal  $1.2 \times 10^{-8}$  mbar. The measurements were done at electron energy of 15 keV.

#### 4. Theoretical calculations

Quantum chemical calculations were performed to confirm the experimental results. The structural parameters of the  $C_3D_8$  were firstly optimized using several approaches based on the wavefunction and density functional theory. The final optimized geometry was calculated at the second order Møller–Plesset perturbation theory (MP2) using the correlation-consistent polarized basis set of Dunning (cc-pVTZ) [17]. The electronic structure calculations have been performed using the Gaussian 16 software package [18]. Quantum Chemical Mass Spectrometry (QCxMS) method, recently proposed by S. Grimme [19, 20] in order to automate the particle–molecule mass spectra calculation for small size molecules was applied. It combines elements of statistical theory with MD and enables the calculations of EI with the computed charge assignments on the resulting spectrum. The comparison of the computed EI mass spectra to the experimental spectra reveals that QCxMS is able to predict some of the main peaks correctly, while other peaks are missing or their intensities are too small compared to experiment. Explaining the significant discrepancies observed between experimental and simulation results requires further detailed analyses, which are currently in progress.

#### 5. Conclusions

In this article, we described an experiment whose aim was to determine the effect of ion source parameters (Dresden EBIT-A) for high electron beam energy  $E_e = 15 \text{ keV}$  on the process of fragmentation of deuterated propane molecules ( $C_3D_8$ ). By selecting suitable parameters for trapping the molecules, extracting, and guiding the fragmentary ions beam, we were able to obtain measurable signal on the FC(B). A magnetic dipole was employed for the process of mass separation, resulting in the acquisition of a comprehensive mass spectrum. Within this spectrum, all potential fragments of the molecular ion  $C_3D_8^+$  were clearly identified. Detailed analysis of the spectrum also revealed the presence of fragmentation ions formed from the

$C_3H_8^+$  molecular ion, likely resulting from the limited purity of the working gas. Additionally, residual gases and highly charged xenon remnants were detected in the mass spectrum. The intensities of individual peaks in the spectrum were measured and compared for different ionization conditions in the EBIS-A. These conditions included different pressure of the molecular gas and electron beam current. Based on these investigations, it was observed that the intensity of individual fragmentation peaks in the  $C_3D_x^+$ ,  $C_2D_x^+$ ,  $CD_x^+$  groups exhibited a proportional increase in response to pressure changes within the range  $3 \times 10^{-9}$  mbar to  $1.5 \times 10^{-8}$  mbar. A similar proportional increase was observed for carbon in different charge states. Notably, the  $C_2D_2^+$  fragmentation peak demonstrated a rapid increase in intensity with changes in both pressure and electron beam current. The electron current significantly affects the intensity of fragment ions, with notable differences depending on the type of the ions. Some ions exhibit saturation of intensity at higher current values, while others show a consistent increase in intensity as the current increases. Characteristic fragments such as  $C_2D_2^+$  and  $CD^+$  stand out with significantly higher intensity values within their groups. These observations highlight the complex relationship between the parameters of the electron beam and the characteristics of the resulting fragment ions. Concluding, the conducted experiments allowed to determine the possibilities of the EBIS-A ion source in the context of molecular fragmentation studies, and the obtained results will be helpful for other groups using a similar device.

Additionally, preliminary quantum chemical calculations were performed using density functional theory and MP2 methods. These results, obtained using quantum chemical mass spectrometry (QCxMS), provide valuable insight into the mechanisms of  $C_3D_8$  fragmentation under high-energy electron impact when compared with experimental data. Although some discrepancies remain, the combined approach demonstrates the potential of EBIS-based ion sources for detailed molecular fragmentation studies.

The obtained experimental and theoretical results will allow us to plan more complex experiments in which fragmentation of molecules in the EI process for high electron beam energies will be studied.

## Acknowledgements

This work was co-financed by the Minister of Science Poland) under the "Regional Excellence Initiative" program (project no.: RID/SP/0015/2024/01). The facility functioning is supported by Polish Ministry of Education and Science (project 28/489259/SPUB/SP/2021). The calculations were performed at Gdańsk University of Technology and the Academic Computer Centre in Gdańsk (CI TASK).

## References

- [1] Kreller, M., Zschornack, G., Kentsch, U., & Heller, R. (2008). Molecule fragmentation at the Dresden EBIS-A. *Review of Scientific Instruments*, 79(2). <https://doi.org/10.1063/1.2804864>
- [2] Currell, F., & Fussmann, G. (2005). Physics of electron beam ion traps and sources. *IEEE Transactions on Plasma Science*, 33(6), 1763–1777. <https://doi.org/10.1109/tps.2005.860072>
- [3] Shirkov, G. D., & Zschornack, G. (1996). Electron Beam Ion Sources. In *Electron Impact Ion Sources for Charged Heavy Ions* (pp. 90–122). [https://doi.org/10.1007/978-3-663-09896-6\\_4](https://doi.org/10.1007/978-3-663-09896-6_4)
- [4] Zschornack, G., Schmidt, M., & Thorn, A. (2013) Electron Beam Ion Sources. *CAS - CERN Accelerator School : Ion Sources* (pp. 165–201). <https://doi.org/10.5170/CERN-2013-007.165>
- [5] Kęcki Z. (2013). *Fundamentals of molecular spectroscopy*. PWN Scientific Publishers
- [6] Anbar, M., & Aberth, W. H. (1974). Field ionization Mass spectrometry: a new tool for the analytical chemist. *Analytical Chemistry*, 46(1), 59A–64A. <https://doi.org/10.1021/ac60337a712>

- [7] Dass, C. (2006). *Fundamentals of Contemporary Mass Spectrometry*. <https://doi.org/10.1002/0470118490>
- [8] Gross, J. H. (2011). Mass spectrometry. In *Springer eBooks*. <https://doi.org/10.1007/978-3-642-10711-5>
- [9] Lattimer, R. P., & Schulten, H. R. (1989). Field ionization and field desorption mass spectrometry: past, present, and future. *Analytical Chemistry*, 61(21), 1201A-1215A. <https://doi.org/10.1021/ac00196a001>
- [10] Huang, Z., Jiang, Y., Dai, X., Zhou, M., & Fang, X. (2024). Improving the efficiency of soft electron ionization by using the oscillatory movement of electrons. *Metrology and Measurement Systems*, 353–367. <https://doi.org/10.24425/mms.2024.149696>
- [11] Wei, F., Huang, Z., Dai, X., Fang, X., & Jin, S. (2023). Quantitative analysis of reaction gases or exhaust using an online process mass spectrometer. *Metrology and Measurement Systems*. <https://doi.org/10.24425/mms.2023.144874>
- [12] Dantus, M. (2024). Tracking Molecular Fragmentation in Electron–Ionization Mass Spectrometry with Ultrafast Time Resolution. *Accounts of Chemical Research*, 57(6), 845–854. <https://doi.org/10.1021/acs.accounts.3c00713>
- [13] Dreebit, *Instruction manual ion irradiation facility L*. Version: 1.0.
- [14] Banaś, D., Braziewicz, J., Semaniak, J., & Pajek, M. (2010). The physics program at the Kielce EBIS-A facility. *Journal of Instrumentation*, 5(09), C09005. <https://doi.org/10.1088/1748-0221/5/09/c09005>
- [15] Banaś, D., Jabłoński, L., Jagodziński, P., Kubala-Kukuś, A., Sobota, D., & Pajek, M. (2014). EBIS-A facility for the studies of X-ray emission from solids bombarded by highly charged ions. *Nuclear Instruments and Methods in Physics Research Section B Beam Interactions With Materials and Atoms*, 354, 125–128. <https://doi.org/10.1016/j.nimb.2014.11.107>
- [16] McLafferty, F. W., & Turecek, F. (1993). Interpretation of mass spectra. Fourth edition. University Science Books.
- [17] Dunning, T. H. (1989). Gaussian basis sets for use in correlated molecular calculations. I. The atoms boron through neon and hydrogen. *The Journal of Chemical Physics*, 90(2), 1007–1023. <https://doi.org/10.1063/1.456153>
- [18] Frisch, M. J., Trucks, G. W., Schlegel, H. B., Scuseria, G. E., Robb, M. A., Cheeseman, J. R., Scalmani, G., Barone, V., Petersson, G. A., Nakatsuji, H. & at al., *Gaussian 16 and Revision C.01. Gaussian and Inc. and Wallingford CT*. <https://gaussian.com/gaussian16/>
- [19] Grimme, S. (2013). Towards first principles calculation of electron impact mass spectra of molecules. *Angewandte Chemie International Edition*, 52(24), 6306–6312. <https://doi.org/10.1002/anie.201300158>
- [20] Bauer, C. A., & Grimme, S. (2016). How to Compute Electron Ionization Mass Spectra from First Principles. *The Journal of Physical Chemistry A*, 120(21), 3755–3766. <https://doi.org/10.1021/acs.jpca.6b02907>

**Karol Szary** - master of physics at the Institute of Physics, Jan Kochanowski University (UJK), Kielce, specializes in spectroscopic techniques like XPS, TXRF, and TCSPC, as well as mass spectrometry. He uses surface analysis methods including optical, confocal, and scanning tunneling microscopy. His research focuses on the production of highly charged ions in EBIT and their application in material surface modification. Additionally, he is passionate about astronomy and astrophotography, actively promoting these fields among children and youth for many years.

**Dariusz Banaś** - associate professor at Jan Kochanowski University in Kielce, Poland. Head of the Department of Atomic and Nanophysics at the Institute of Physics of the UJK and the Department of Physical Methods at the Holy Cross Cancer Center in Kielce. Since 2020, Dean of the Faculty of Natural Sciences of the UJK. Co-author of over 190 publications from in the field of atomic, materials and medical physics. His scientific interests include research on the structure of atoms and matter using X-ray techniques and scanning microscopy, as well as processes occurring in the interaction of highly charged ions with various materials.

**Ilona Stabrawa** - earned her PhD in physics from Jan Kochanowski University in Kielce in 2022, where she currently works as an assistant professor. She is a scientific researcher at the Department of Physical Methods at the Holy Cross Cancer Center and the Head of the X-ray Methods Laboratory at the Center for Research and Analysis UJK. Her scientific activity focuses on studying the interactions of highly charged ions produced in electron beam ion trap with metallic surfaces. Co-author of over 40 publications.

**Regina Stachura** - assistant professor at Jan Kochanowski University in Kielce, Poland. Co-author of around 10 scientific publications. She also works as a R&D expert at the Świętokrzyski Laboratory Campus of the Central Office of Measures and as a laboratory technician at The Center for Research and Analysis UJK. Her research interests include studying the effects of irradiation of materials with highly charged ions and elemental composition analysis using low-angle X-ray techniques.

**Aldona Kubala-Kukuś** - associate professor at Jan Kochanowski University in Kielce, Poland. Since 2024, Director of the Institute of Physics at the Faculty of Natural Sciences. She is a scientific researcher at the Department of Physical Methods at the Holy Cross Cancer Center and Quality Manager at The Center for Research and Analysis UJK. Co-author of around 100 scientific publications. Her research focuses on the study of elemental content in materials, especially trace elements, using low-angle X-ray techniques (TXRF, GIXRF, TRXPS).

**Jacek Semaniak** - professor of physical sciences, full professor and the head of the Department of Medical Physics and Biophysics at Jan Kochanowski University in Kielce, Poland. Co-author of almost 100 journal publications in the field of atomic, molecular and biophysics physics. Since 2024, president of the Central Office of Measures (National Institute of Metrology, Poland).

**Paweł Jagodziński** – assistant professor at Jan Kochanowski University in Kielce, Poland. Co-author of 50 publications in the field of atomic physics. He also works as a R&D expert at the Świętokrzyski Laboratory Campus of the Central Office of Measures. His scientific interests include simulation studies of the properties of diffraction spectrometers, which facilitate the design, construction, and application of such devices in high-energy resolution X-ray spectroscopy experiments, as well as modeling the properties of nanolayers based on measurements using the X-ray reflectometry method.

**Daniel Sobota** – he earned a master's degree in physics from the Warsaw University of Technology. He currently works as an engineering and technical assistant and radiation protection inspector at Jan Kochanowski University in Kielce at Institute of Physics, Department of Atomic Physics and Nanophysics. He specializes in high-vacuum systems and EBIT ion source operation. He also studies X-ray emissions from EBIT plasmas.

**Marek Pajek** - professor of physical sciences at Jan Kochanowski University in Kielce, Poland. Co-author of over 150 publications in the field of atomic physics and ion–matter interactions. He is involved in the study of electron transitions in atoms, including two-electron one-photon X-ray processes. His research also focuses on highly charged ions collisions with solids and atomic phenomena involving HCLs generated using electron beam ion trap.

**Bartosz Majewski** - earned a B.Eng. degree in Applied Physics in 2022 and an M.Sc. degree in Biomedical Engineering, with a specialization in Medical Physics, in 2023 - both from Gdańsk University of Technology (GUT). Currently, he is pursuing a Ph.D. in Physical Sciences at GUT's Faculty of Applied Physics and Mathematics, Department of Theoretical Physics and Quantum Information, under Prof. Marta Łabuda's supervision. His research focuses on molecular dynamics and investigation of physical and chemical processes by means of advanced machine learning methods.

**Marta Łabuda** received double Ph.D. from Claude Bernard University Lyon 1 and Gdańsk University of Technology (GUT) (in theoretical physics) in 2006. She was awarded twice of Marie Skłodowska Curie Grants: Intra-European Fellowships for Career Development (post-doc in chemistry) at Friedrich Schiller University in Jena (2008-2010) and European Reintegration Grant (in physics) at GUT. Currently, she works at GUT as an Associate Professor in physics. Her research focuses on quantum molecular physics and chemistry as well as AI models to help to predict the structure of molecules and mechanisms occurring in chemical reactions.